



1626 Balltown Road  
 Niskayuna, New York 12309  
 Phone: (518) 382.2511  
 Fax: (518) 382.2529  
 CEEB code: 335110

# 2019-2020 PROFILE

# Niskayuna High School

Niskayuna Central School District **A National School of Excellence**

*Administration:* Dr. Cosimo Tangorra, Jr. Superintendent  
 Marie Digirolamo, Assistant Superintendent  
 for Instruction  
 John W. Rickert, Principal  
 Dr. Eva Jones, Assistant Principal  
 Anthony Malizia, Assistant Principal

*High School Counselors:*  
 Tim Albanese, talbanese@niskayschools.org  
 Nancy Bushee, nbushee@niskayschools.org  
 Amelia Hajjar, ahajjar@niskayschools.org  
 Anne-Marie Hughes, ahughes@niskayschools.org  
 Karl Swisher, kswisher@niskayschools.org  
 Leah Wertz, lwertz@niskayschools.org

## The School and Community

Niskayuna is a suburban community with an approximate population of 21,500 residents. It is conveniently located in the Albany-Schenectady-Troy metropolitan area. The community has long provided strong and consistent support to an effective and forward-looking educational program. The school district takes in students from the towns of Niskayuna and Rexford and parts of Glenville and Colonie.

While Niskayuna is essentially a residential community, industry leaders such as GE Global Research, Knolls Atomic Power Laboratory, the WRGB television studio, Environment One, and SI Group Inc., are located here. It is significant to note that our students come from very diverse backgrounds and experiences with over 20 different world languages represented in our hallways.

Niskayuna High School is a focal point of the community. We are a comprehensive high school with a student population of 1,400 students in grades 9-12. Thirteen departments offer a rich variety of programs designed to meet the needs of a talented student population. Offerings include 46 honors and 15 AP classes, options for interdisciplinary studies, and a broad range of electives. Classes are offered in five 78-minute blocks on alternate days.

## Distinctions

Niskayuna High School has been recognized by several local, state and national entities as the best high school in the area. In addition, we have been recognized as the top

high school in the area by the Albany Business Review on several occasions over the past few years. The New York State Education Department has named Niskayuna High School a "Reward School" for outstanding performance and achievement on state assessments. In each of the last three years, *Newsweek* named Niskayuna High School to its list of 500 top high schools in the nation, reaching No. 26 in 2014. Upon heading into the 21st Century, *The Wall Street Journal* published a report that ranked Niskayuna High School in the top ten high schools in the country based upon achievement data, standardized test scores, and SAT results. Each year, our students rank among the best in the area on performance on all state assessments, graduation rates, and college and career readiness.

There are more than 125 faculty members at Niskayuna High School, 99 percent of whom hold advanced degrees, including 4 doctoral degrees. In addition, 14 members of our teaching faculty are distinguished with National Board Certification. This is the highest percentage of nationally certified teachers in the Capital area.

## CLASS OF 2019 POST HIGH SCHOOL PLANS

Four-year college or university	76%
Two-year college	15%
Military	1%
Employment	1%
Other	7%



## Honors & Advanced Placement

Students who demonstrate superior promise in English, social studies, science, math, foreign language, art and music may be recommended for honors or AP courses in one or more of these subjects. Students may also “self select” for these courses. A complete Program of Studies is available on the district Web site at [www.niskayunaschools.org](http://www.niskayunaschools.org).

### ADVANCED PLACEMENT EXAMS 2019

269 students wrote 482 exams ... 93% scored 3 or higher

Academic Area	FREQUENCY OF SCORES					Total Written
	5	4	3	2	1	
Biology	6	26	16	0	0	48
Calculus AB	15	7	2	0	0	24
Calculus BC	29	1	1	0	0	31
Chemistry	15	14	7	3	0	39
Computer Science A	14	10	7	1	1	33
Economics Macro	5	10	2	0	1	18
Economics Micro	4	3	1	0	0	8
English Lang & Comp	18	23	16	10	0	67
English Lit & Comp	1	2	1	0	0	4
French Language	2	4	4	3	0	13
German Language	1	0	0	0	0	1
Human Geography	1	3	2	0	0	6
Physics C: E&M	5	3	2	3	0	13
Physics C: Mechanics	13	2	1	0	0	16
Spanish Language	5	9	3	0	0	17
Statistics	15	18	6	1	0	40
Studio Art: Drawing	2	4	2	0	0	8
U.S. Gov't & Politics	3	8	4	1	1	17
U.S. History	13	10	5	2	0	30
World History	24	10	12	2	1	49
<b>TOTALS</b>	<b>191</b>	<b>167</b>	<b>94</b>	<b>26</b>	<b>4</b>	<b>482</b>

## HONORS COURSES

- English 9 Honors
- English 10 Honors
- English 11 Honors/AP
- SUPA English 12
- English 12 Honors/AP
- Global History I Honors, II Honors
- U.S. History Honors
- Introduction to Political Science Honors
- Geometry Accelerated
- Algebra 2
- Pre-Calculus Honors
- Multivariable Calculus
- Biology Honors
- Chemistry Honors
- Earth Science Honors
- Physics Honors
- French II Honors, III Honors, IV Honors, V Honors
- German Accelerated I/II, II Honors, III Honors, IV Honors, V Honors
- Latin Accelerated I/II, IV Honors, V Honors
- Spanish II Honors, III Honors, IV Honors, V Honors
- Advanced Art Studio
- Advanced Jewelry
- Advanced Ceramics
- Advanced Studio in Film
- Advanced Studio in Computer Arts
- Advanced Digital Photography
- Advanced Sculpture
- Advanced Studio in Graphic Design
- Symphonic Band
- Music Theory II
- Jazz Ensemble
- Studio Singers
- Orchestra Winds
- Symphony Orchestra
- Concert Chorale
- Chamber Strings
- Bel Canto Voices

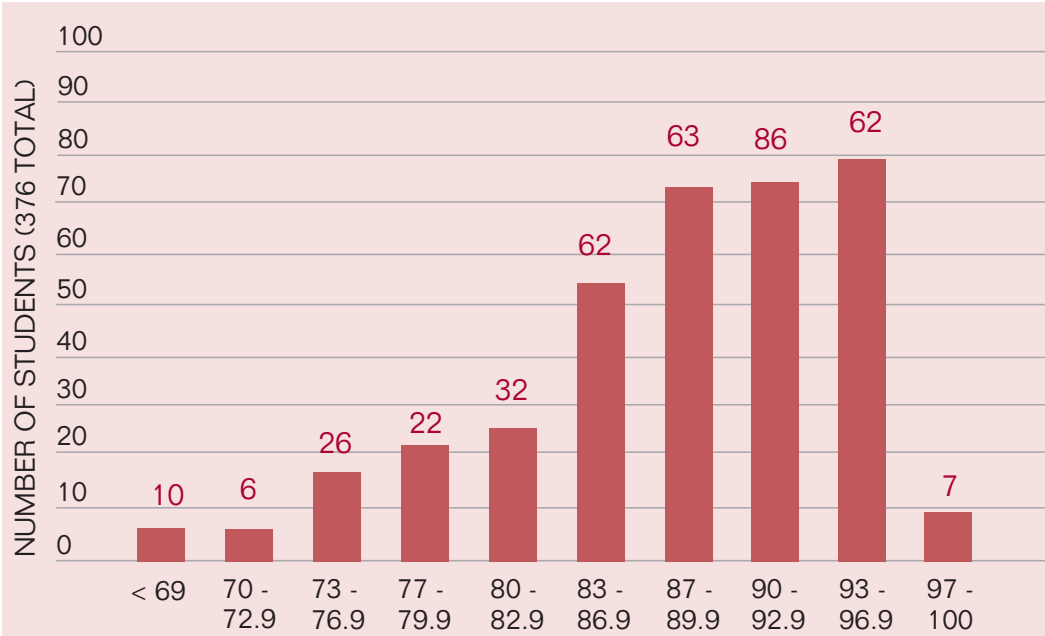
## AP COURSES

- AP English 11 Honors
- AP English 12 Honors
- AP United States History
- AP Micro Economics
- AP Macro Economics
- AP Macro Economics & United States Government
- AP American Government & Politics
- AP Human Geography
- AP World History
- AP U.S. Government & Politics
- AP Calculus AB
- AP Calculus BC
- AP Statistics
- AP Computer Science AB
- AP Biology
- AP Chemistry
- AP Physics

# Grading

The GPA chart in this profile is based on six semesters of grades for this class. The grading system is detailed below. Note: There is no weighting of Honors or AP courses.

## CLASS OF 2019 SIXTH SEMESTER CUMULATIVE G.P.A. DISTRIBUTION (as of 9/19)



## NISKAYUNA HIGH SCHOOL GRADING SYSTEM

Quality Scale	Letter Grade	Equivalent
4.3	A+	97-100
4.0	A	93-96
3.7	A-	90-92
3.3	B+	87-89
3.0	B	83-86
2.7	B-	80-82
2.3	C+	77-79
2.0	C	73-76
1.7	C-	70-72
1.0	D	65-69
0.0	F	Below 65
W-Withdrawn		
P- Pass (Course evaluated on a pass-fail basis)		

## NISKAYUNA AVERAGE ACT SCORES – THREE YEAR TREND

Year	# tested	English	Math	Reading	Science	Composite
2015-16	171	26.2	27.2	27.1	26.7	27.0
2016-17	161	25.7	26.9	26.8	26.0	26.5
2017-18	136	26.4	27.0	27.4	26.6	27.0

## CLASS OF 2019 SAT SCORES REPORT

SAT Scores	Percentage of Students
1400-1600	27%
1200-1390	34%
1000-1190	31%
800-990	9%
600-700	0%
400-590	0%

## NATIONAL MERIT SCHOLARSHIP PROGRAM

Number of Participants	217
Semifinalists	6
Letters of Commendation	12

## 2018-19 SAT

	%
Met ERW Benchmark	91
Met Math Benchmark	86
Met Both Benchmarks	88

## OVERALL MEAN SCORES

Mean Scores	1249
Mean Read & Writing Scores	613
Mean Math Scores	635

## Colleges & Universities currently attended by Niskayuna graduates:

Albany College of Pharmacy  
 Alfred University  
 Allegheny College  
 American University  
 Arizona State University  
 Barnard College  
 Bates College  
 Belmont Abbey College  
 Bentley University  
 Boston College  
 Boston University  
 Bowdoin College  
 Brandeis University  
 Brigham Young University  
 Brown University  
 Bryant University  
 Bucknell University  
 Canisius College  
 Castleton State College  
 Case Western Reserve University  
 Catholic University of America, The  
 Cazenovia College  
 Central Connecticut State University  
 Centura College  
 Champlain College  
 Chapman College  
 Clark University  
 Clarkson University  
 Coastal Carolina University  
 Coker College  
 Colby College  
 Colgate University  
 College of Holy Cross, The  
 College of Saint Rose, The  
 Columbia University  
 Concordia University - Irvine  
 Concordia University - Montreal  
 Cooper Union for the Advancement of Science & Art, The  
 Cornell University  
 Culinary Institute of America, The  
 Davidson College  
 DePaul University  
 Drexel University  
 Duke University  
 Duquesne University  
 Elon University  
 Emerson College  
 Emmanuel College  
 Emory University  
 Endicott College  
 Fairfield University  
 Fashion Institute of Technology  
 First Coast Technical College  
 Flagler College  
 Florida Gulf Coast University  
 Florida Institute of Technology  
 Florida Southern College  
 Florida State University  
 Fordham University  
 Franklin Pierce University  
 Full Sail University  
 George Washington University, The  
 Georgetown University  
 Georgia Institute of Technology  
 Hamilton College  
 Hampton University

Hampton University  
 Hartwick College  
 Harvey Mudd College  
 Hobart & William Smith College  
 Hofstra University  
 Houghton College  
 Howard University  
 Husson University  
 Iona College  
 Iowa State University  
 Ithaca College  
 Johns Hopkins University  
 Johnson & Wales University, Providence RI  
 King's College  
 Le Moyne College  
 LIM College  
 Limestone College  
 Loyola University Maryland  
 Loyola Marymount University  
 Macalester College  
 Manhattan College  
 Manhattan School of Music  
 Maria College  
 Marist College  
 Maryland Institute College of Art  
 Massachusetts Institute of Technology  
 McGill University  
 Mercyhurst College  
 Middlebury College  
 Mount Holyoke College  
 Nazareth College  
 New York University  
 Niagara University  
 North Carolina State University  
 Northeastern University  
 Northwestern University  
 Ohio State University, The  
 Pace University, New York City  
 Pratt Institute  
 Princeton University  
 Providence College  
 Quinnipiac University  
 Rensselaer Polytechnic Institute  
 Rochester Institute of Technology  
 Russell Sage College  
 Rutgers University, New Brunswick  
 Rutgers University, Newark  
 Sacred Heart University  
 Sage College of Albany  
 Saint Leo University  
 Saint Mary's College, Notre Dame  
 Salisbury University  
 Savannah College of Art and Design  
 School of the Museum of Fine Arts  
 School of Visual Arts  
 Siena College  
 Skidmore College  
 Smith College  
 Southern New Hampshire University  
 St. Bonaventure University  
 St. John's University - Queens  
 State University of New York, Albany  
 State University of New York, Alfred  
 State University of New York,

Binghamton  
 State University of New York, Brockport  
 State University of New York, Buffalo  
 State University of New York, College of Technology at Canton  
 State University of New York, Cobleskill  
 State University of New York, Cortland  
 State University of New York, Delhi  
 State University of New York, Environmental Science and Forestry  
 State University of New York, Fredonia  
 State University of New York, Geneseo  
 State University of New York, Morrisville  
 State University of New York, New Paltz  
 State University of New York, Oneonta  
 State University of New York, Oswego  
 State University of New York, Plattsburgh  
 State University of New York, Polytechnic Institute  
 State University of New York, Potsdam  
 State University of New York, Purchase  
 State University of New York, Stony Brook  
 Susquehanna University  
 Swarthmore College  
 Syracuse University  
 Temple University  
 Thomas College  
 Tufts University  
 U.S. Military Academy, West Point  
 U.S. Naval Academy  
 Union College  
 University of Alabama, Tuscaloosa  
 University of Alabama in Huntsville  
 University of Arizona  
 University of California at Berkeley  
 University of California, Davis  
 University of California, Irvine  
 University of California at Los Angeles  
 University of California, San Diego  
 University of California, Santa Barbara  
 University of Central Florida  
 University of Chester, England  
 University of Colorado at Boulder  
 University of Connecticut  
 University of Dayton  
 University of Delaware  
 University of Florida  
 University of Georgia  
 University of Hartford  
 University of Illinois at Urbana-Champaign

University of Kentucky  
 University of Maryland, College Park  
 University of Massachusetts, Amherst  
 University of New England  
 University of New Hampshire at Durham  
 University of New Haven  
 University of Pennsylvania  
 University of Pittsburgh  
 University of Rhode Island  
 University of Richmond  
 University of Rochester  
 University of Tampa, The  
 University of Texas, Dallas  
 University of Toronto  
 University of Utah  
 University of Vermont  
 University of Virginia  
 Utica College  
 Villanova University  
 Wagner College  
 Wake Forest University  
 Washington University in St. Louis  
 Wentworth Institute of Technology  
 Western New England College  
 Wheaton College, MA  
 Worcester Polytechnic Institute  
 Yale University

### Community Colleges & Two Year Programs

SUNY Adirondack  
 First Coast Technical College  
 Hudson Valley Community College  
 Schenectady County Community College  
 Tidewater Community College